

MS150 Rider Route (Highlighted)
Preferred Vehicle Alternate Route

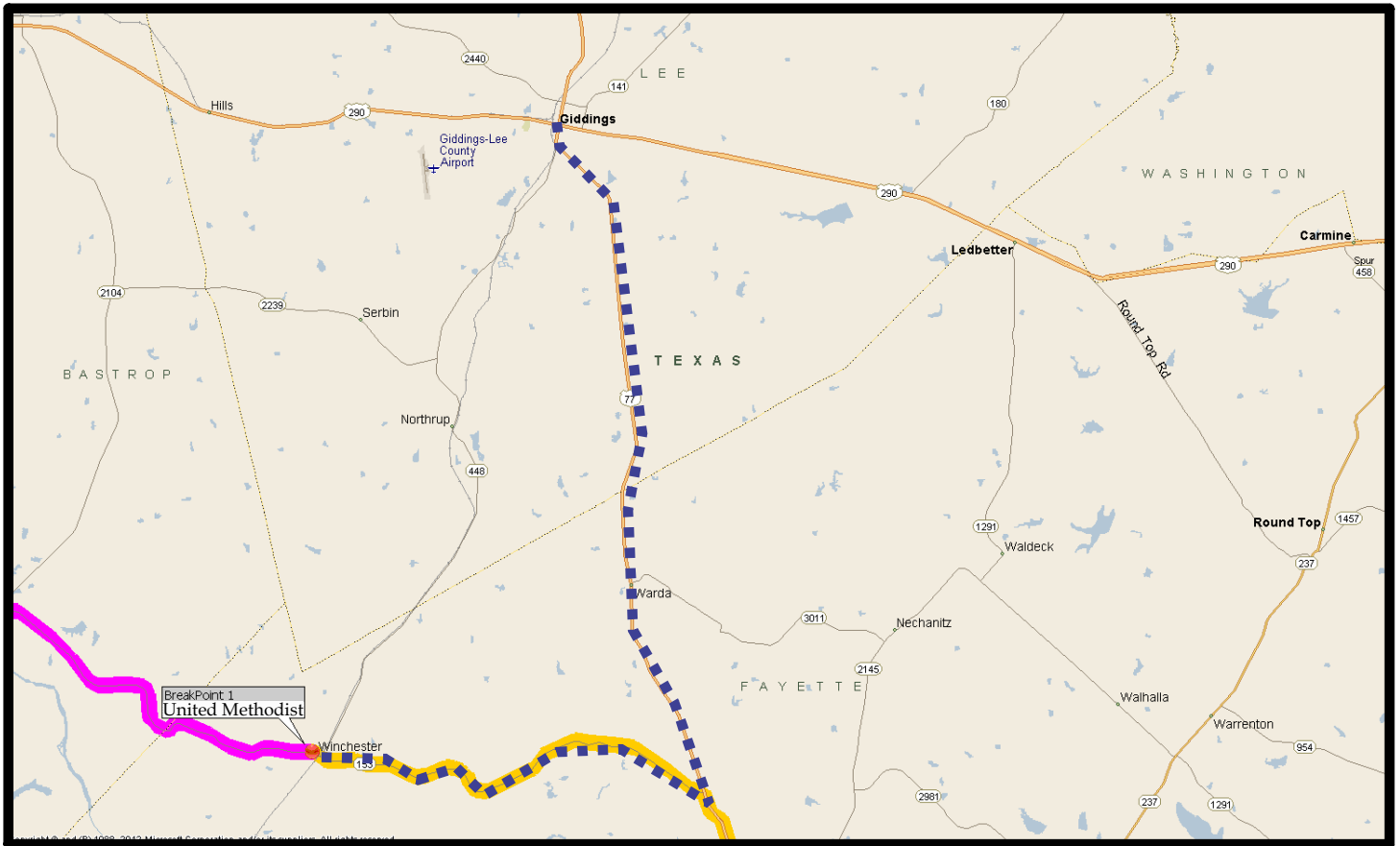
Sunday BreakPoint 1

Volunteers will drive the route taken by the riders - be careful
VOLUNTEER HOURS - 6:00 AM TO 10:30 AM

** These instructions start at the Lagrange Fairgrounds.

- Turn left out of the Fairgrounds on Highway 77, and head North 4.8 miles to FM-153. Turn left.
- Travel 8.3 miles West to Winchester. After passing over the Railroad Tracks you will travel 3 blocks to Frio Street, the open area to your left is the Volunteer Parking area.
- The BreakPoint will be close to the intersection of Frio Street and Thomas Street.

United Methodist Church / Zilss Hall
FM 153, Winchester, TX
GPS: 30.0100N 97.0159W



MS150 Rider Route (Highlighted)

Preferred Vehicle Alternate Route

Sunday BreakPoint 1

Please be careful, this is the same route taken by the riders
VOLUNTEER HOURS - 6:00AM TO 10:30 AM

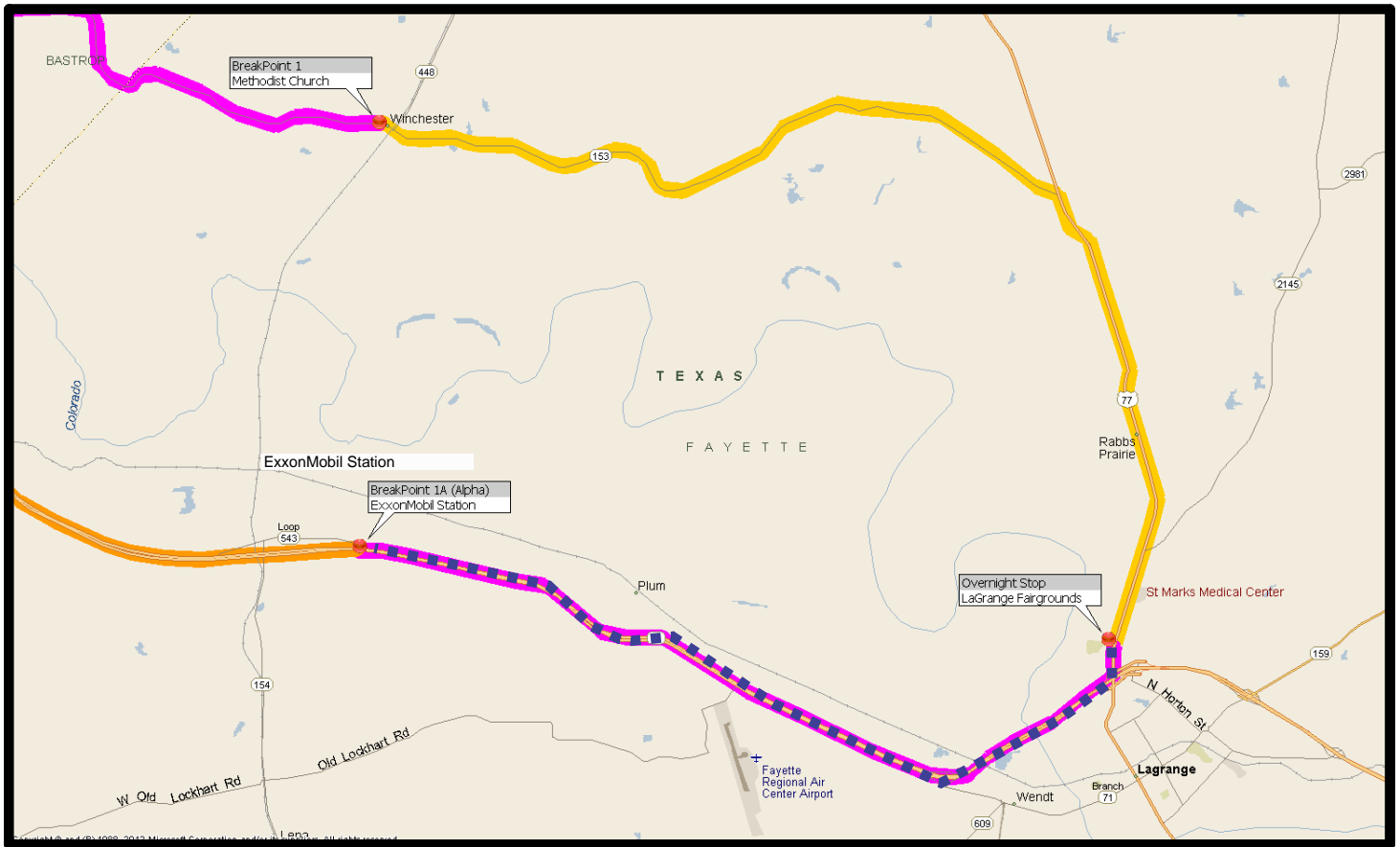
**These instructions start at Giddings TX

- Take HWY 77 about 13.6 miles South. You will arrive at FM 153. Turn right.

- Take FM 153 to Winchester (about 8.3 miles). After passing over the Railroad Tracks you will travel 3 blocks to Frio Street, the open area to your left is the Volunteer Parking area.

- The BreakPoint will be close to the intersection of Frio Street and Thomas Street.

United Methodist Church / Zilss Hall
 FM 153, Winchester, TX
 GPS: 30.0100N 97.0159W



MS150 Rider Route (Highlighted)

Preferred Vehicle Alternate Route

Sunday BreakPoint 1A (Alpha)

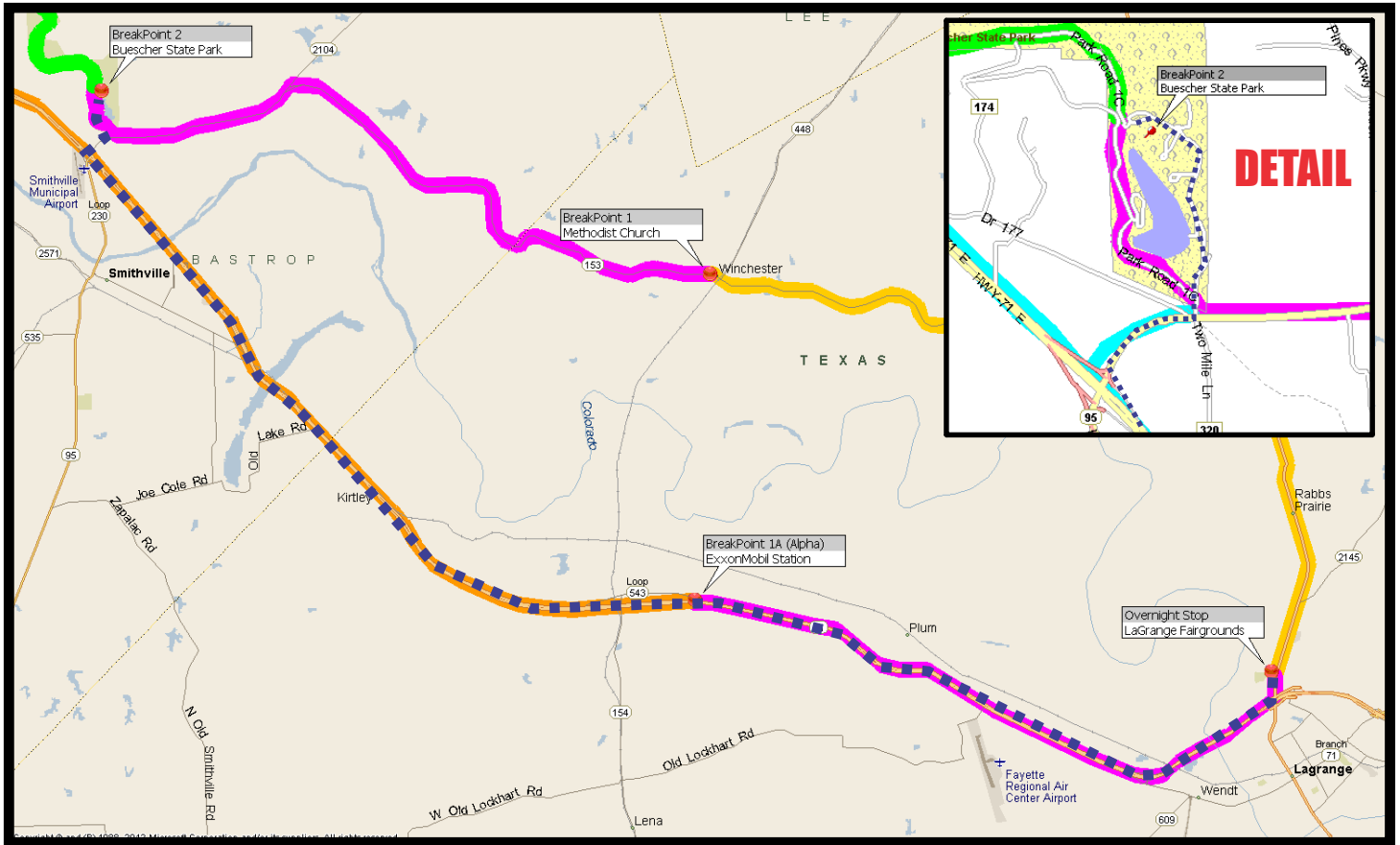
Volunteers will drive the route taken by the riders - be careful
VOLUNTEER HOURS - 6:00 AM TO 10:30 AM

** These instructions start at the Lagrange Fairgrounds.

- Turn right out of the Fairgrounds on Highway 77, and head South 1 mile to Highway 71. Turn right.

- Travel 6.8 miles West to the ExxonMobil Station. You will see the BreakPoint to the right of Highway 71. Volunteer parking is on the far side of the gas station.

Exxon Mobil Gas Station
 Hwy 71 (West), West Point, TX
 GPS: 29.94330N 97.0200W



MS150 Rider Route (Highlighted)
Preferred Vehicle Alternate Route

Sunday BreakPoint 2

Volunteers will drive the route taken by the riders - be careful
VOLUNTEER HOURS - 7:00 AM TO 12:30 PM

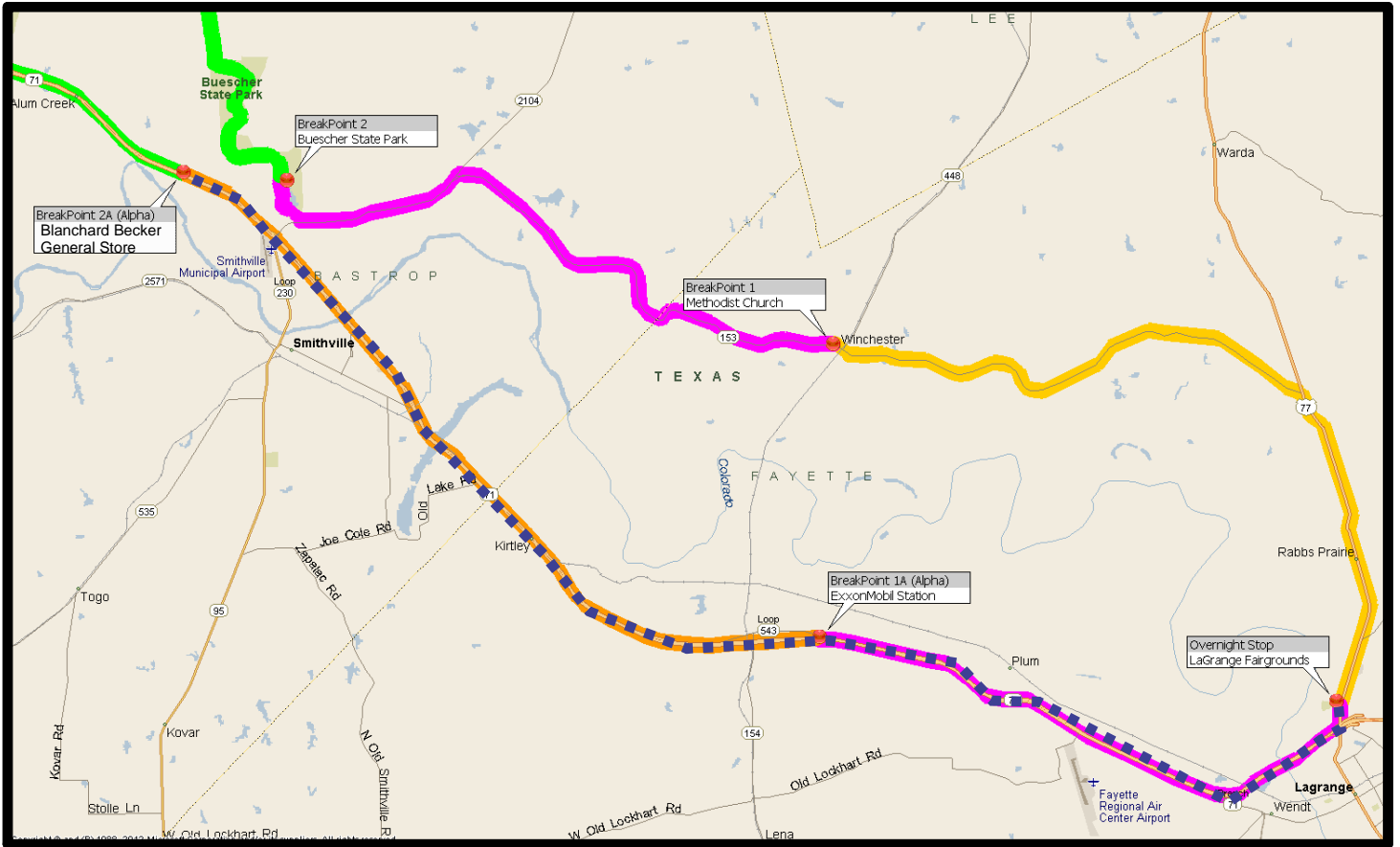
** These instructions start at the LaGrange Fairgrounds.

- Turn right out of the Fairgrounds on Highway 77, and head South 1 mile to Highway 71. Turn right.
- Travel 20.9 miles West to FM-153. Turn right.
- Travel 0.4 miles to the Buescher State Park entrance, turn left.
- Travel 0.9 miles to the BreakPoint. Please keep to the right, which is the event automobile route (see detail above).

Please note, you will pass another BreakPoint while traveling to the Buescher State Park BreakPoint. That BreakPoint already has assigned volunteers.

GPS: 30.048 N 97.162 W

WWW.BOLMANSKI.COM



MS150 Rider Route (Highlighted)

Preferred Vehicle Alternate Route

Sunday BreakPoint 2A (Alpha)

Volunteers will drive the route taken by the riders - be careful
VOLUNTEER HOURS - 6:00 AM TO 1:00 PM

** These instructions start at the LaGrange Fairgrounds.

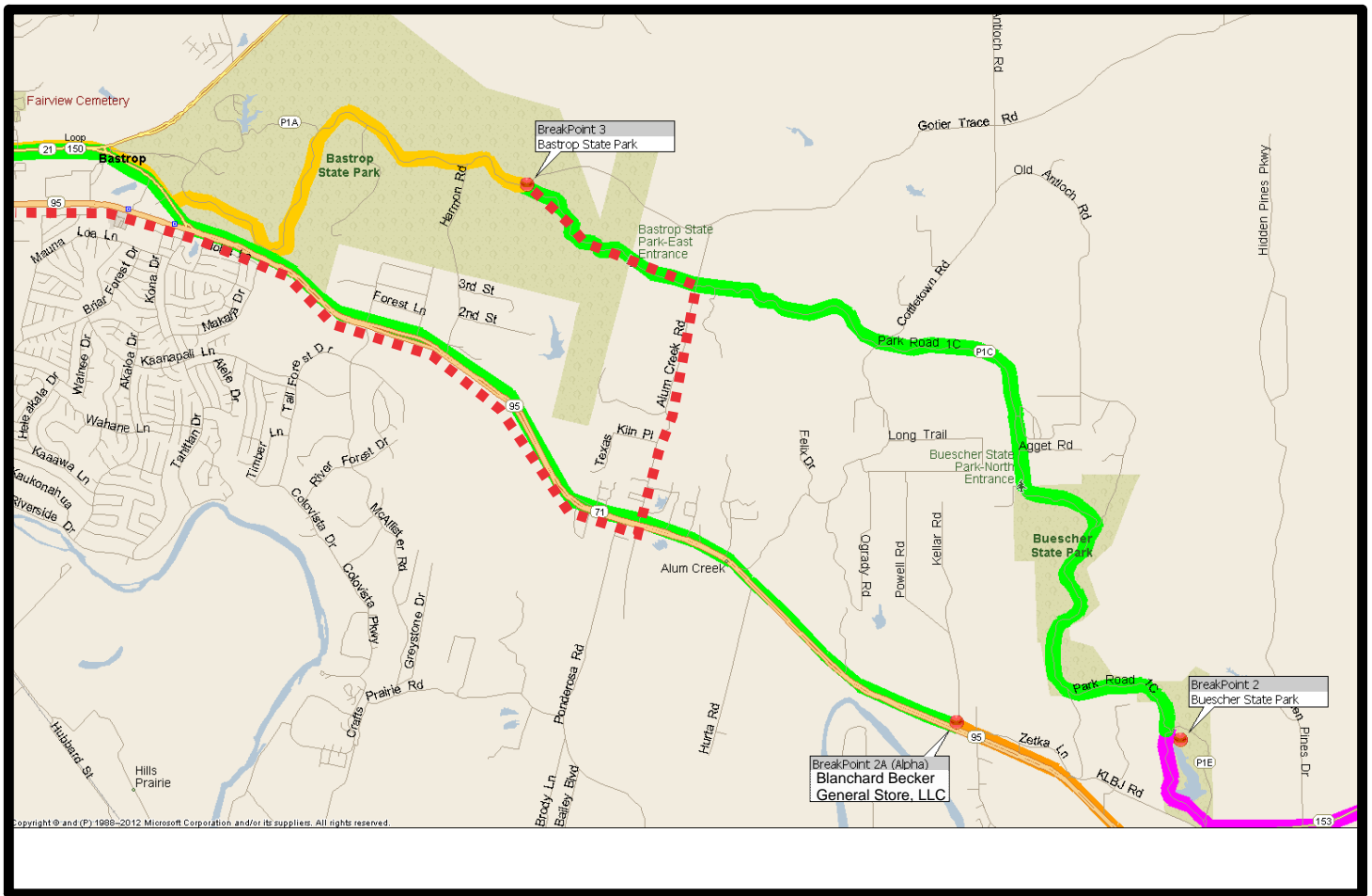
- Turn right out of the Fairgrounds on Highway 77, and head South 1 mile to Highway 71. Turn right.

- Travel 23.5 miles West to the Blanchard Becker General Store BreakPoint. You will see the BreakPoint to the right of Highway 71 after a strip center.

Please note, you will pass another BreakPoint while traveling to BP2A (Alpha). That BreakPoint already has assigned volunteers.

Blanchard Becker General Store
 HWY 71, Smithville, TX
 GPS: 30.0503N 97.1893W

WWW.BOLMANSKI.COM



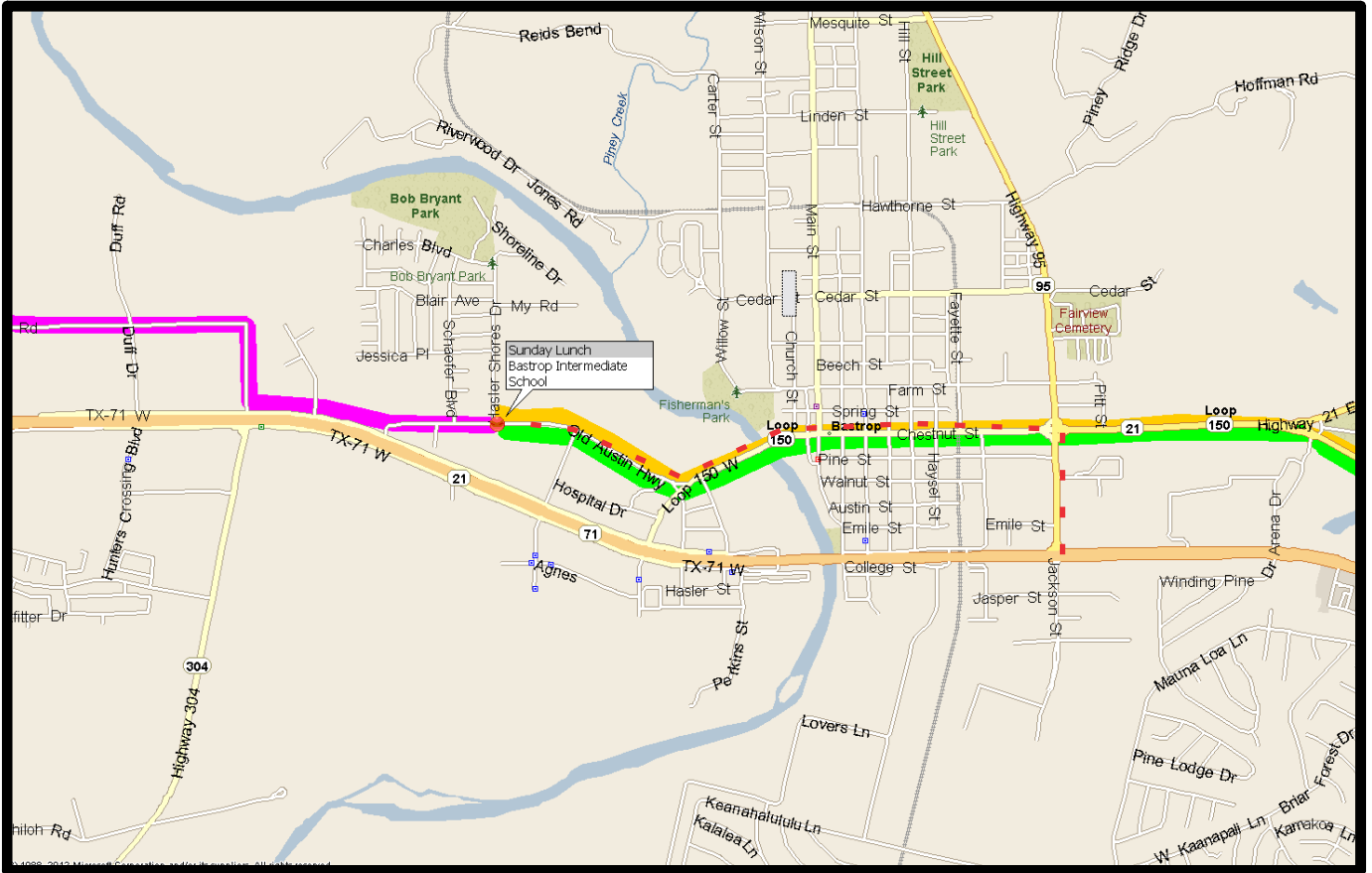
MS150 Rider Route (Highlighted)
 Preferred Vehicle Alternate Route

Sunday BreakPoint 3

Volunteers will drive the route taken by the riders - be careful
VOLUNTEER HOURS - 7:30 AM TO 1:30 PM

- * These instructions start at Bastrop TX. at the intersection of Highway 95 and Highway 71 E.
- Go East on Highway 71 E. approximately 5.6 miles. Take a left on Alum Creek Road.
- Travel 1.8 miles to State Hwy. Park Road 1. Turn left.
- Travel 1.6 miles to the BreakPoint in the Park. It is in an electrical easement under the power lines. It really does feel like you travel forever until you find it, but you can't help but see it when you arrive.

GPS: 30.106 N 97.240 W



MS150 Rider Route (Highlighted)

Preferred Vehicle Alternate Route

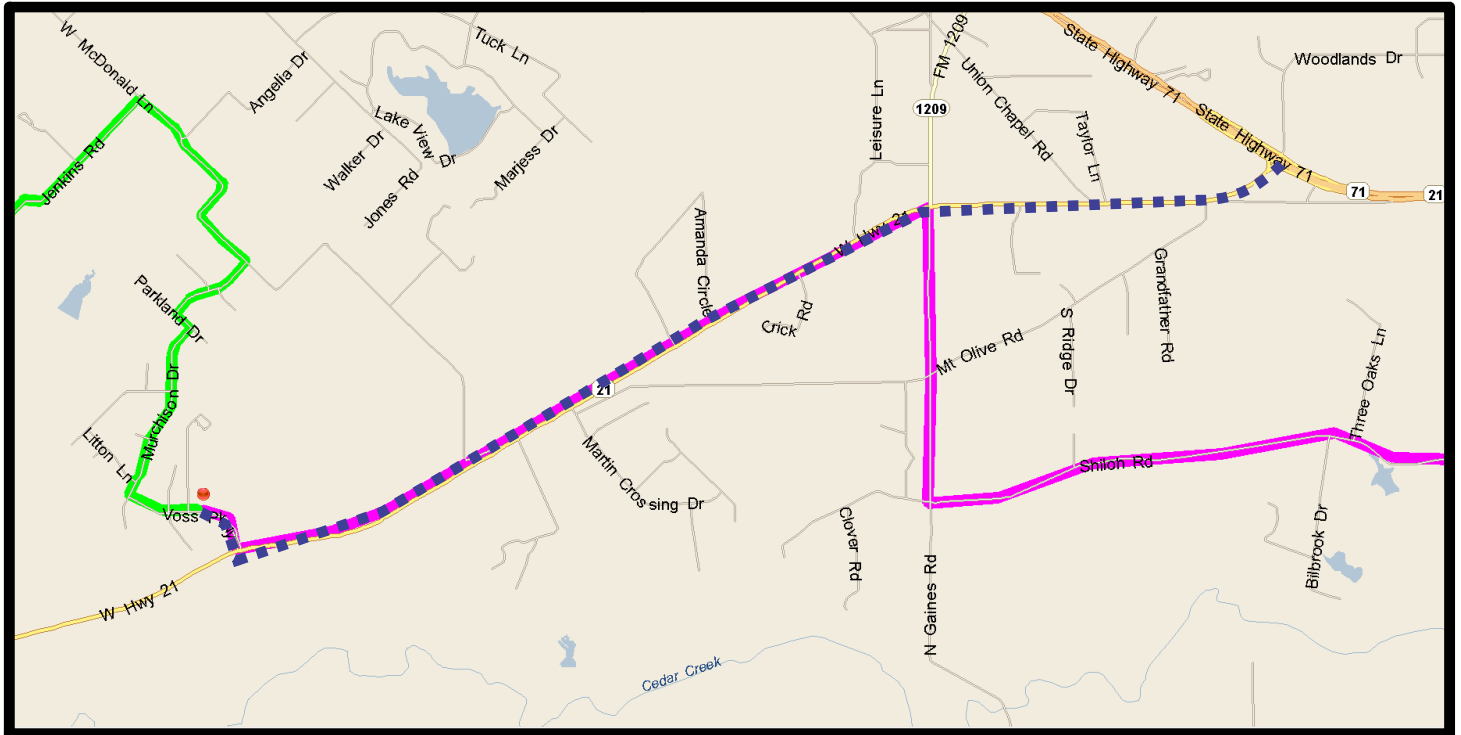
Sunday Lunch Bastrop Intermediate School VOLUNTEER HOURS - 7:30 AM TO 3:00 PM

** These instructions start at Bastrop TX. at the intersection of Highway 95 and Highway 71 E. These instructions follow the route taken by the riders, but you should be arriving way before the riders travel on these roads.

- Go North on Highway 95 approximately 0.35 miles. Turn Left on Loop 150.
- Travel 1.2 miles, turn Right on Old Austin Highway
- Travel 0.6 miles to the Bastrop Intermediate School Parking Lot on your Right.

Bastrop Intermediate School
509 Old Austin Hwy.
Bastrop, TX 78602
GPS 30.1106N 97.3354W

WWW.BOLMANSKI.COM



MS150 Rider Route (Highlighted)

Preferred Vehicle Alternate Route

Sunday BreakPoint 4

Volunteers will drive the route taken by the riders - be careful
VOLUNTEER HOURS - 8:00 AM TO 4:30 PM

** These instructions start West of Bastrop TX., at the intersection of HWY 71 and HWY 21 West (exit for San Marcos)

- Exit the freeway, and stay in the left turn lane. Turn left onto TX-21 West
- Travel 4.1 miles, and turn right onto Voss Pkwy
- Travel 0.3 miles and turn right into the Cedar Creek Middle School parking lot

Cedar Creek Middle School
 125 Voss Parkway
 Cedar Creek, TX 78612
 GPS: 30.099263, -97.4816722