

Saturday • April 26, 2025

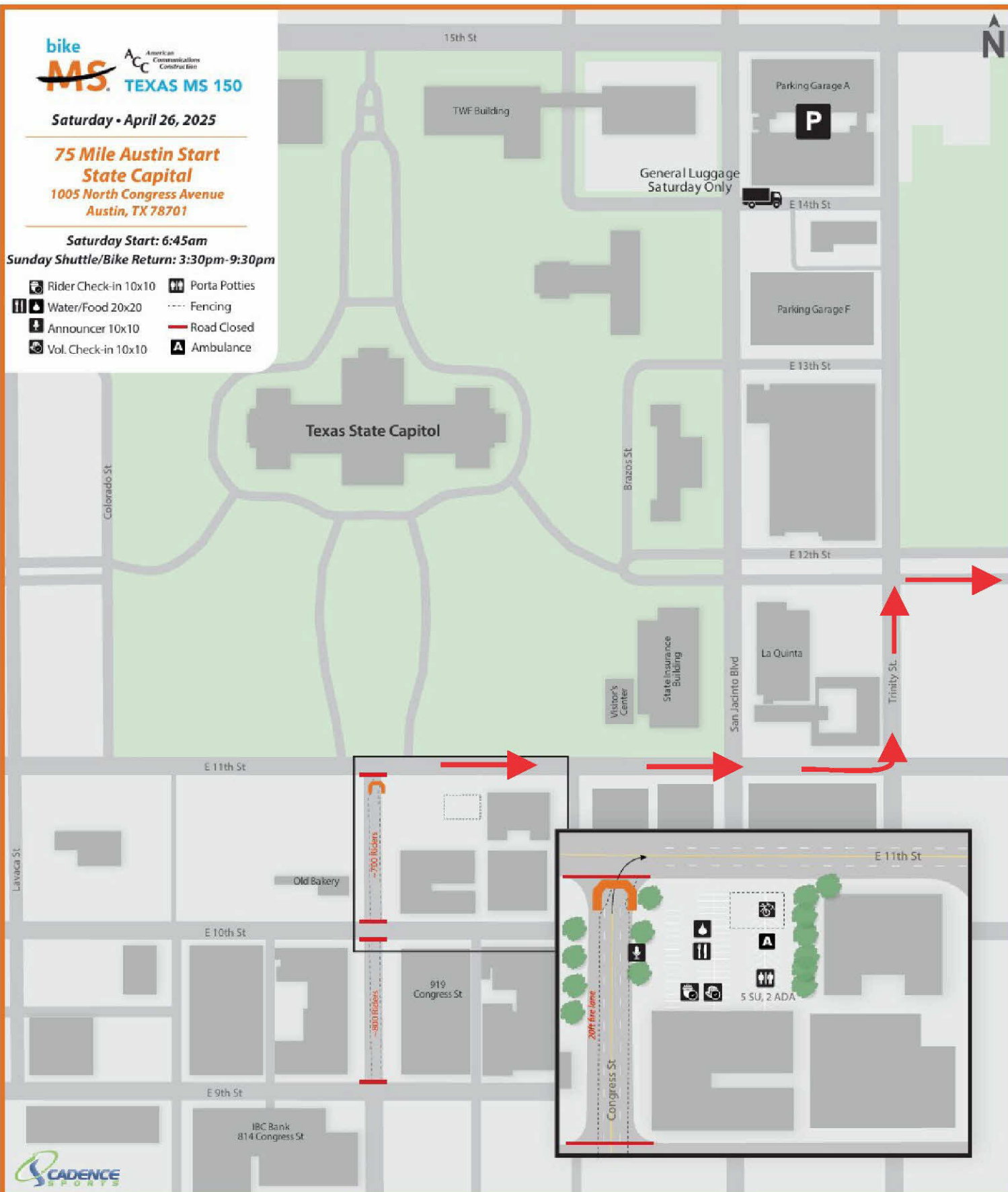
**75 Mile Austin Start
 State Capital**

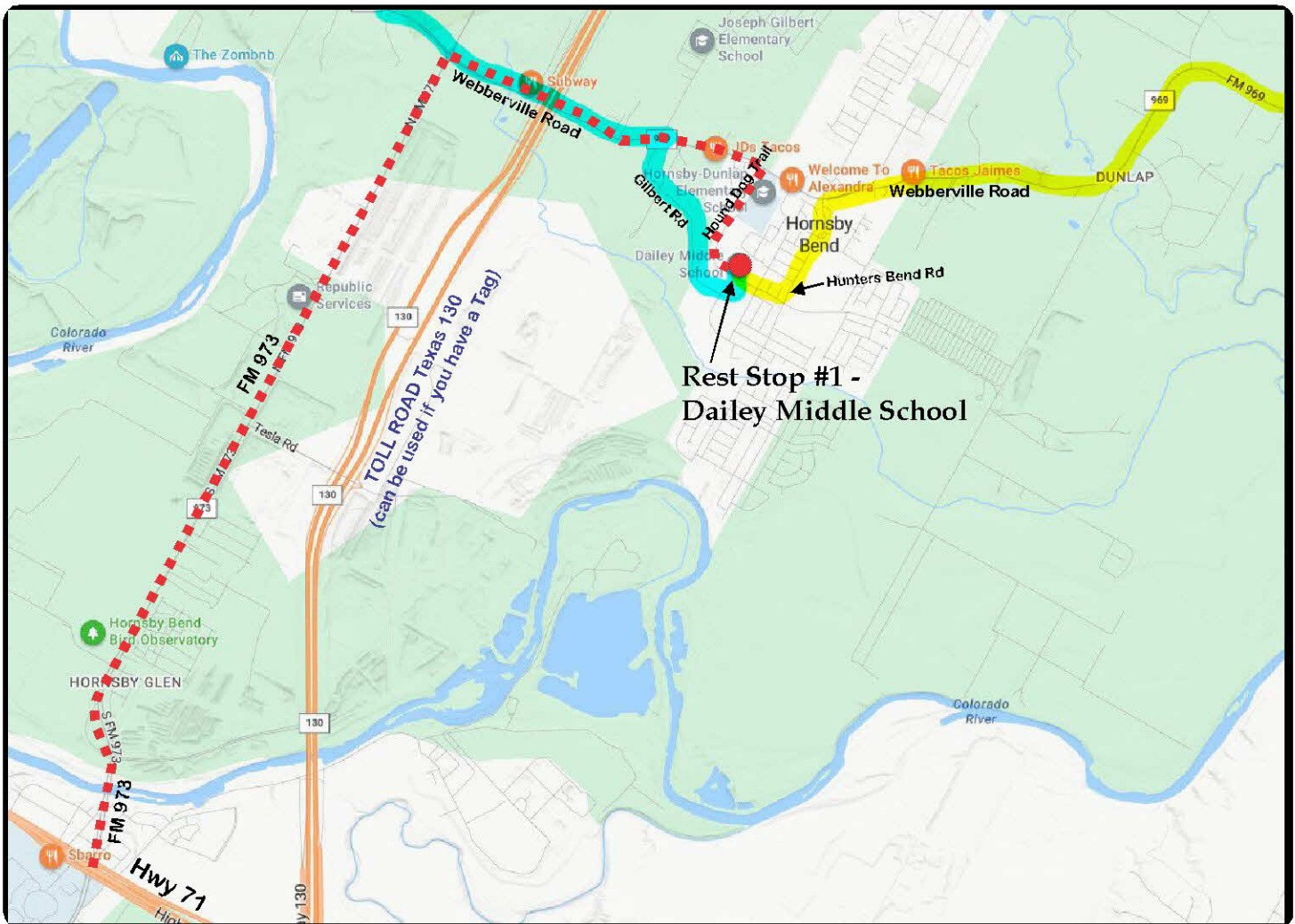
**1005 North Congress Avenue
 Austin, TX 78701**

Saturday Start: 6:45am

Sunday Shuttle/Bike Return: 3:30pm-9:30pm

- Rider Check-in 10x10
- Porta Potties
- Water/Food 20x20
- Announcer 10x10
- Vol. Check-in 10x10
- Fencing
- Road Closed
- Ambulance





Graphic Image courtesy of <https://www.bing.com/maps>



MS150 Rider Route (Highlighted)
Preferred Vehicle Alternate Route

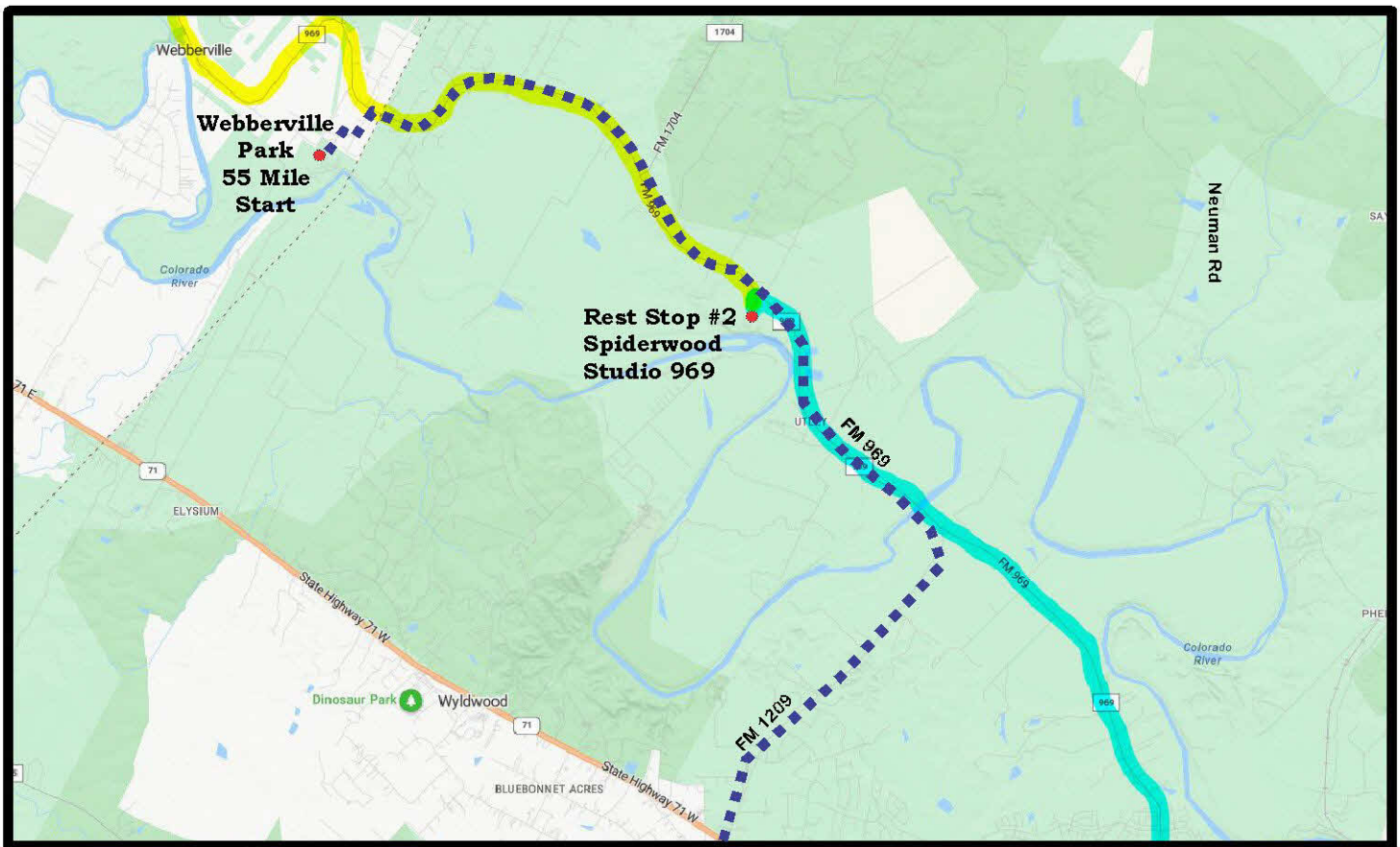
Austin Route Saturday Rest Stop #1

VOLUNTEER HOURS - 6:00 AM TO 10:00 AM

**** These instructions start at Hwy 71 and FM 973 (Austin Tx.)**

- If traveling from downtown Austin, travel on Hwy 71 to FM 973. Exit the Highway and turn Left (you will be travelling North)
- Travel 4.0 miles North. You will come to the 4-Way Intersection with Webberville Road. Turn right.
- Travel 1.6 miles until reaching Hound Dog Trail, Turn Right.
- Travel 0.7 miles to Rest Stop #1. Turn left.

Daniel Middle School
 14000 Westfall Street
 Austin, TX 78725



MS150 Rider Route (Highlighted)

Preferred Vehicle Alternate Route

Austin Route - Webberville Park 55 Mile Start

You will drive the route taken by the riders - be careful

CYCLISTS START - 8:30 AM

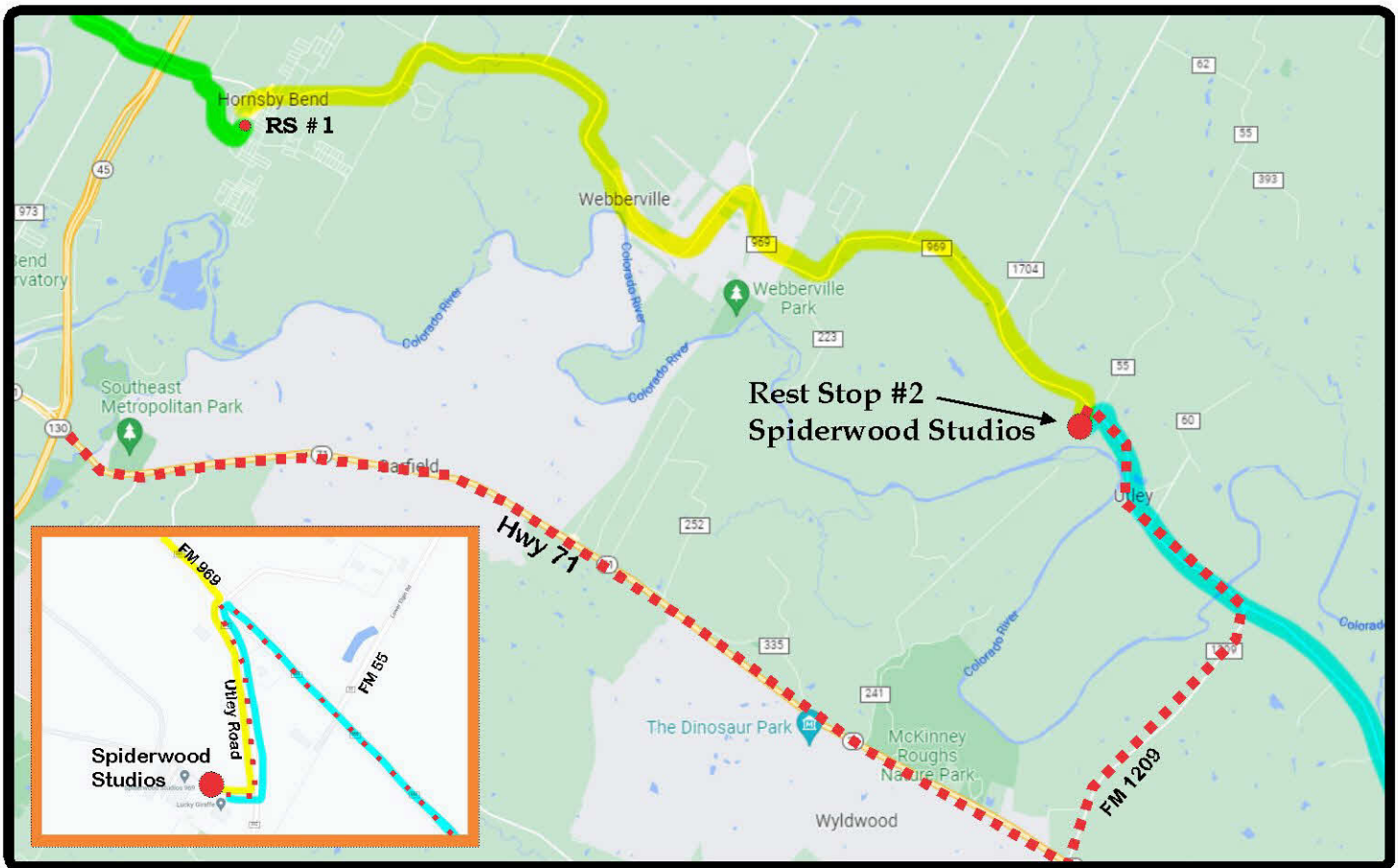
** These instructions start West of Bastrop TX at the intersection of Highway FM-1209 and Highway 71.

- Go North on FM-1209 approximately 3.6 miles to FM-969. Turn left.

- Travel 7.8 miles to Webberwood Drive and turn left (Webberville Volunteer Fire Department is just North of this street). Travel 0.45 miles to get to Webberville County Park. Refer to the Webberville Park 55 Mile Start Layout for details. Cyclists will enter the Event Parking Area from Park Lane.

At 8:30 AM the cyclists will travel North to join the Riders that are the Main Route that started in Austin.

Webberville County Park
2305 Park Ln.
Elgin, TX 78621
GPS: 30.214550, -97.495471



Graphic Image courtesy of <https://www.google.com/maps>



MS150 Rider Route (Highlighted)

Preferred Vehicle Alternate Route

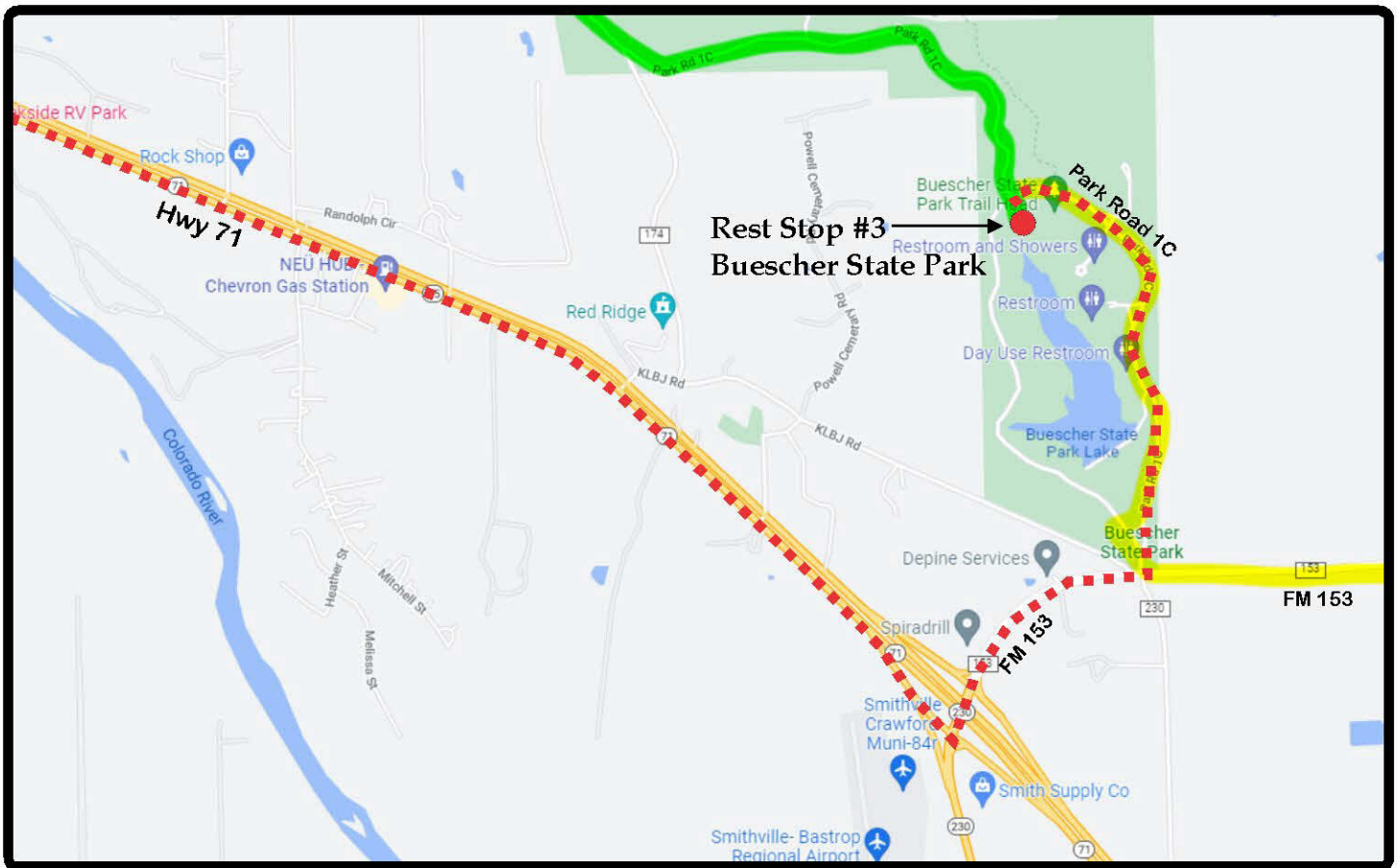
Saturday Rest Stop #2

VOLUNTEER HOURS - 6:00 AM TO 11:00 AM

** These instructions start at Hwy 71 and Tollway TX 130 (Austin Tx.)

- Travel 12.4 miles East. You will come to the Intersection with FM 1209. Turn left.
- Travel 3.7 miles North. You will come to the T-Intersection with FM 969. Turn left.
- Travel 3.0 miles to Utley Road. Turn left.
- Travel 0.2 miles until reaching Rest Stop #2. Turn right and park in Lot 5.

Spiderwood Studios
140 Utley Road
Elgin, TX 78621



Graphic image courtesy of <https://www.google.com/maps>



MS150 Rider Route (Highlighted)

Preferred Vehicle Alternate Route

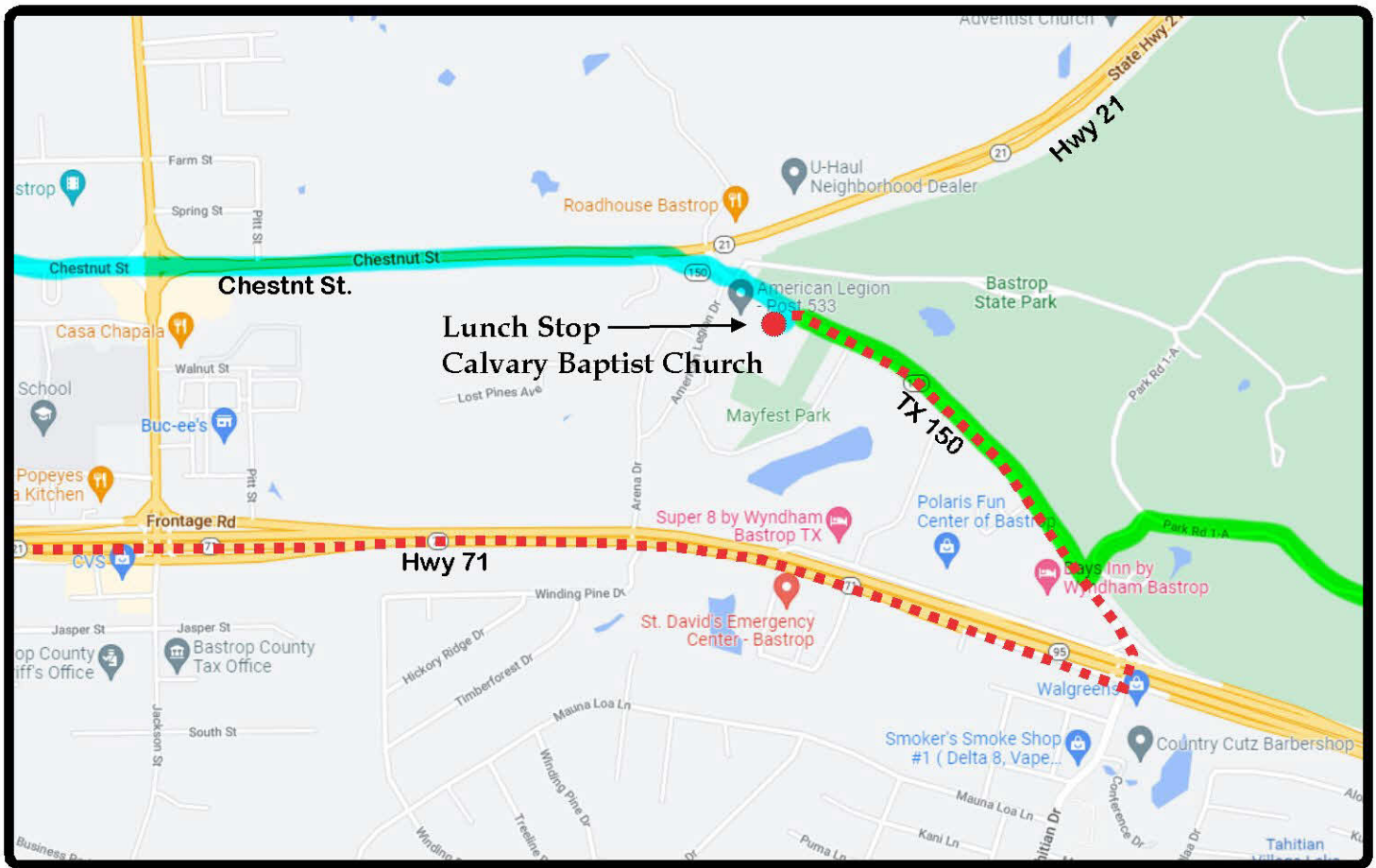
Saturday Rest Stop #3

VOLUNTEER HOURS - 7:30 AM TO 3:00 PM

**** These instructions start at Hwy 71 and Tollway TX 130 (Austin Tx.)**

- Travel 22 miles East on Hwy 71. You will come to the Intersection with FM 153. Turn left.
- Travel 0.5 miles North. You will come to the entrance of Buescher State Park. Turn left.
- Tell the guard shack that you are a Volunteer for the Texas MS 150, and you should be granted free access to work at Rest Stop #3. Veer to the right and travel along Park Road 1C
- Travel 0.8 miles until reaching Rest Stop #3. Turn left.

Buescher State Park
100 Park Road 1C
Smithville, TX 78957



Graphic Image courtesy of <https://www.google.com/maps>



MS150 Rider Route (Highlighted)

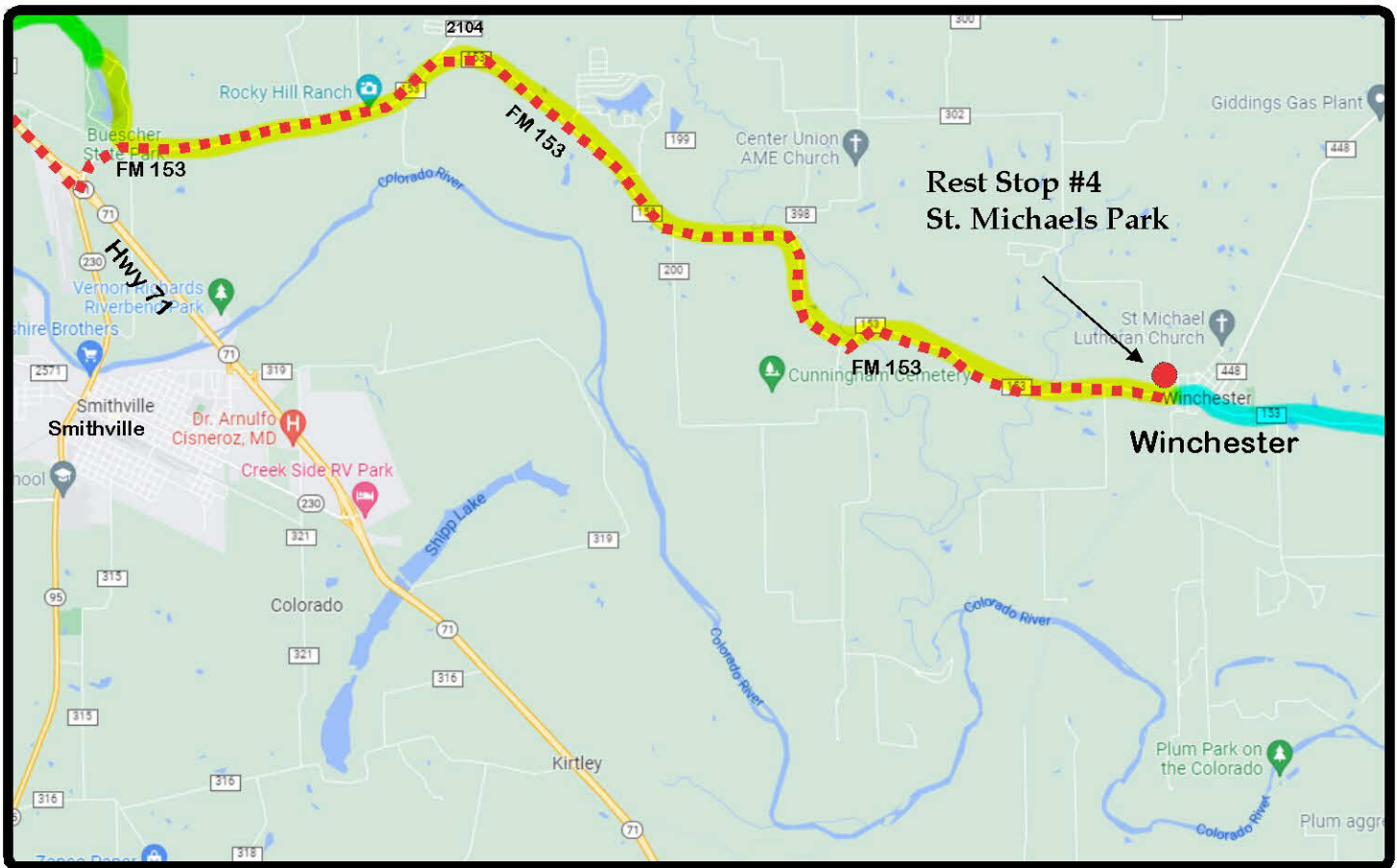
Preferred Vehicle Alternate Route

Saturday Lunch on Austin to La Grange Route VOLUNTEER HOURS - 7:00 AM TO 12:30 PM

**** These instructions start at Hwy 71 and Tollway TX 130 (Austin Tx.)**

- Travel 18.2 miles East on Hwy 71. You will pass Bastrop, and come to the exit for FM 150, exit and stay on the feeder road until you reach the traffic light. Turn left.
- Travel 0.6 miles North. You will reach the Lunch Stop at Calvary Baptist Church, and turn left into the parking lot.
- Please review the Overview Map for where to park.

Calvary Baptist Church
3005 TX-150
Bastrop, TX 78602



Graphic Image courtesy of <https://www.google.com/maps>



MS150 Rider Route (Highlighted)

Preferred Vehicle Alternate Route

Saturday Rest Stop #4 VOLUNTEER HOURS - 8:00 AM TO 5:30 PM

**** These instructions start at Hwy 71 and Tollway TX 130 (Austin Tx.)**

- Travel 22 miles East on Hwy 71. You will come to the Intersection with FM 153 near Smithville. Turn left.
- Travel 3.3 miles Northeast along FM 153 to the intersection with FM 2104 . Veer to the right at the top of the hill and continue on FM 153 East.
- Travel 7.5 miles to Frio Street in the town of Winchester. Turn Left.
- Rest Stop #4 will be 0.24 miles down Frio Street on the Right.

Please review the Overview Map for where to park.

St. Michaels Park
 310 Frio Street
 La Grange, TX 78945